



COMPANY PROFILE
2016

CONCEPT TO COMPLETION

INDEX



-
- Health, Safety and Environmental
 - BBBEE and Skills Development
 - Quality
 - Capabilities
 - Key Projects
 - Company structure
 - Contact details

ABOUT US:



Alliance Construction is a civil, building construction company which specialises in earthworks, concrete works, general building works.

Our key regions for business includes Gauteng, North west, Kwazulu-Natal, Western Cape. We also have successfully completed various works and will do new projects outside the borders of South Africa i.e. Zimbabwe and Zambia with future prospects in Mozambique and Malawi.

The company has recently opened a Satellite branch in Richardsdbay to service the North coast and the Zululand regions of Kwazulu Natal and will be opening a branch in Stilbay, Western Cape.

The company together with its highly motivated workforce can ensure projects being delivered in time and within budget.

SAFETY, HEALTH & ENVIRONMENTAL



In order to give practical expression to our commitment and to measure our progress, we have the following procedures:

Safety & Health

Prevent or minimise work-related injuries and health impairment of employees and contractors.
We implemented ZERO HARM principles across our business unit

Environment

Conserve environmental resources.
Prevent or minimise adverse impacts arising from our operations.

MANAGEMENT PRINCIPLES

All our operations are required to adhere to the following principles in a systematic and comprehensive fashion and actively encourage implementation by business partners.

- Commitment
- Evaluation
- Competence
- Risk assessment
- Prevention and control
- Stakeholder engagement
- Performance

Further our company is obligated to comply with the provisions of this policy.

BBBEE and SKILLS DEVELOPMENT



We continue on our transformation journey and recognises transformation as a business imperative and is committed to improving the business and culture rigorously at all levels, we are currently a level 4 contributor.

We commit ourselves to improve continuously in terms of employment equity, skill development and socio-economic development.

We strive to create opportunities for local employees, suppliers and subcontractors whenever possible to create skills development.

We supply training to all employees and sub-contractors to achieve sustainable development and add to the growth of South African skilled labour.

The company is committed to providing effective leadership based on an ethical Foundation that forms the day to day activities.

QUALITY



Our target projects are R 10 000 000.00 to R 25 000 000.00, which we have previously completed with great results.

Alliance construction strives itself on the quality of our workman ship and the quality of the projects we deliver.

We have internal and external procedures and audits in place to ensure quality assurance in the workplace and the system is working for ourselves and the client. Quality management is an integral part of construction and we base our management system on quality and all senior management takes full responsibility for quality.

CAPABILITIES



Capabilities	Industry segments							
	Transport	Power	Mining	Water	Infrastructure	Commercial	Industrial	Private
Mining Infrastructure	X				X			
Bulk earthworks	X	X	X	X	X	X	X	X
Roads and bridges infrastructure	X		X	X	X	X	X	X
Commercial, industrial buildings	X	X	X	X	X	X	X	X
Residential buildings			X			X		X
Concrete and concrete repairs	X	X	X	X	X	X	X	X
Design and construct								X
Structural steel (medium scale)	X	X			X	X	X	X
Pump stations			X	X	X			x
Electrical substations	X	X	X	x	X	X	X	X

Key projects



Bulk concrete works: We have just completed a bulk concrete works projects for a client in the Port of Richards bay which was more that 16000m3 of structural concrete in 5 months



Key Projects



Electrical substation civil works:

We have completed various electrical sub- and switching stations for a variety of clients in South Africa and Zimbabwe with project values ranging from R3 million to R15 million.



Key projects



Warehousing And Factories:

Alliance Construction have completed a wide variety of industrial buildings in the private & public sectors.



Key projects



Bulk Earthworks:

We have access to majority of Earthworks equipment and can take on vast amount of earthworks.

Available equipment:

- Excavators
- Tlb's
- Tipper trucks
- Adt's
- Compaction equipment(Rollers 3t-10t)
- Waterbrowsers
- Skid steers
- Graders
- We can also outsource any equipment required



Key projects



Pump stations:

Alliance Construction have constructed pump stations in the agricultural section and for Rand water in the Vaal district.



Key Projects



Raise bore drilling civil works:

Alliance Construction is a sub contractor for Murray and Roberts cementation and work hand in hand with them on the ventilation shafts on various mines in and outside of South Africa (Zimbabwe, Zambia)



Key Projects



Infrastructure projects:

We have completed numerous infrastructure projects that consist of storm water drains, small bridges, dam inlet and outlet structures private roads and driveways, storm water reticulation in various sectors of South Africa.

Projects ranging from R5 million to R25 million.

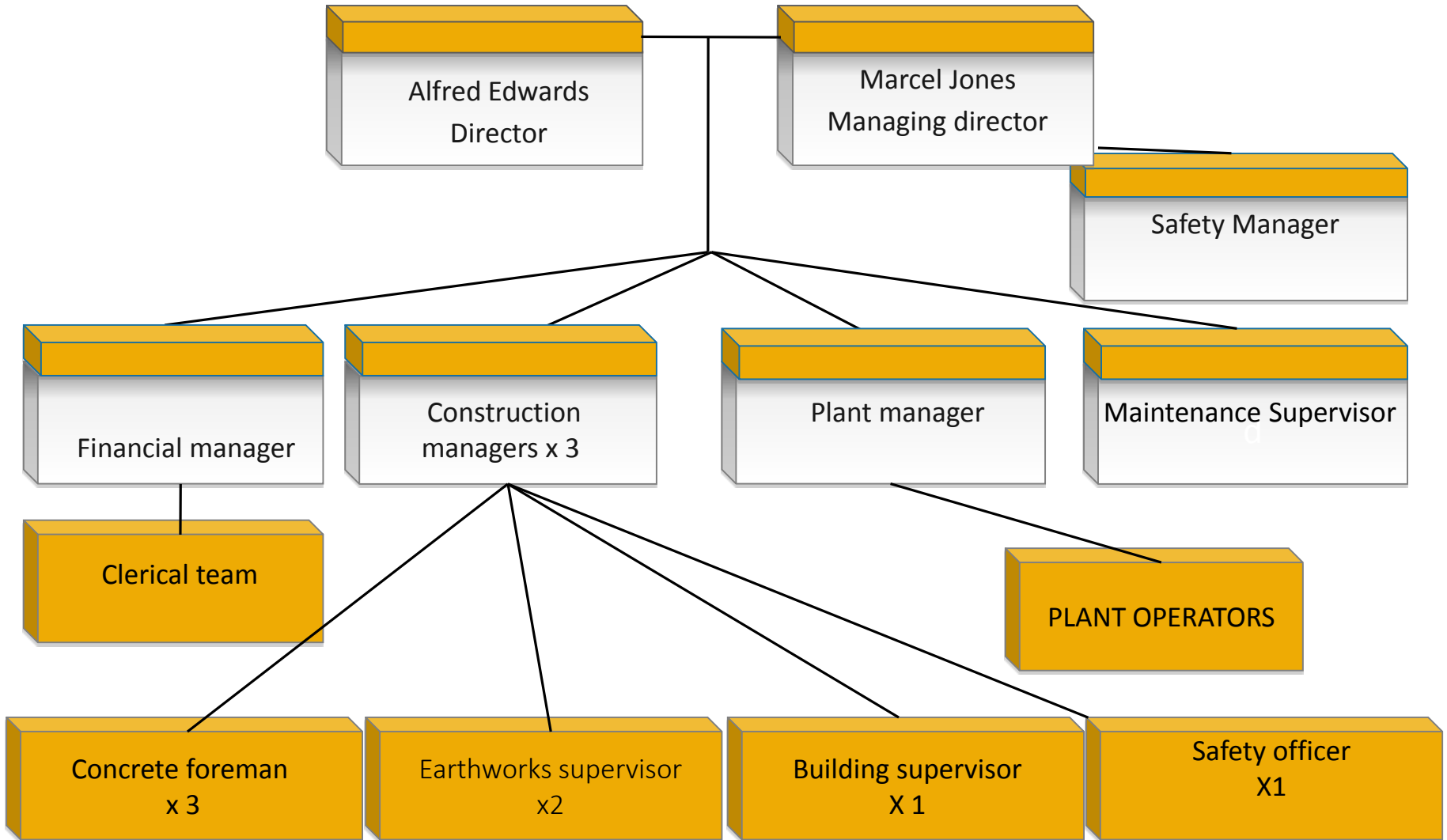


Renowned Clients



- Murray & Roberts Cementation
- Siemens Ltd.
- Anglo Platinum Zimbabwe
- DRA
- Gautrain –Bombela CJV
- ABB
- Actom
- Aveng-Grinaker
- Transnet
- Rand Water
- Stefanutti & Stocks
- Royal Haskoning
- SANSA (South African national space agency)

Company Organogram





COMPANY DETAILS

ALLIANCE CONSTRUCTION CC.

HEAD OFFICE

ADDRESS: 10 CLIFFORD ROAD, CHANCLIFF, KRUGERSDORP, 1739

TEL NR: 010 590 3137

FAX NR: 086 218 8668

EMAIL: info@allco.co.za (general information)

marcel@allco.co.za (business enquiries)

REG NR: 2004/061344/23

VAT NR: 4350181097

POSTAL: 850 RANT EN DAL

1751

Closure



Alliance Construction is a successful Civil, building and earthworks construction Company.

The Company is committed in offering quality workmanship with value for money products to End Users and Investors.

Assuring you of our commitment and professionalism at all times.

CONCEPT TO COMPLETION